



4-MONTH
PROGRESS REPORT

NHRDI UPDATE

July 1, 2022



WELCOME

These are exciting times as NHRDI moves toward a new season of growth. I am proud to be a part of an exceptional group of individuals dedicated to the formation and success of this organization. As new people align with our mission and vision, I anticipate their contributions will magnify the talents and passions of our Executive Director and committee chairs. I invite you to join us at this pivotal time. We welcome you with open arms.

Phoebe Manalang
Board Chair
Chicago, IL



*BY BOARD CHAIR &
EXECUTIVE DIRECTOR*

I am thrilled to step into the role of founding Executive Director. Over the last four months, we have created a working board and established volunteer committees to organize the work of NHRDI. We are also building a different type of research institute, one that is guided by researchers and practitioners exploring the impact of higher brain activity on advanced stages of adult human development. We are demonstrating the power of utilizing both a flexible and critical mindset in the design and execution of our research and education programs. Please join us as we build this organization.

Dr. Paul Halvorson
Founding Executive Director
Minneapolis, MN



ABOUT NHRDI

MISSION

Advance higher human potential and evolution through research and education.

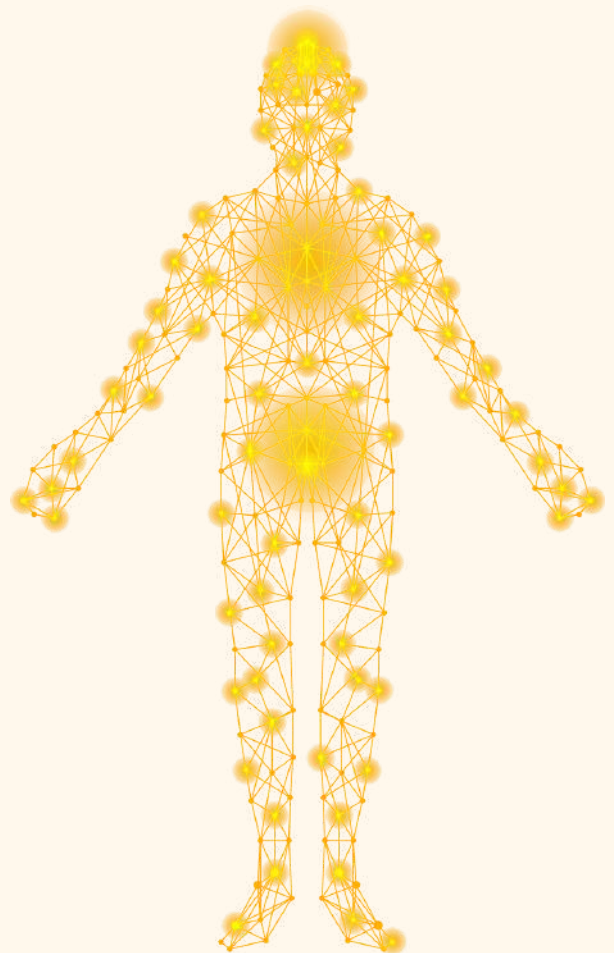
VISION

Adults experience improved quality of life activated by whole brain functioning and efficiency validated by research.

ORGANIZATIONAL PURPOSE

The New Human Research and Development Institute sponsors scientific and applied research projects designed to explore the role of the body's inner organic technology to catalyze higher human potential and the experience of thriving.

MISSION, VISION,
ORGANIZATIONAL PURPOSE



WHAT WE ARE INVESTIGATING AND WHY IT MATTERS

We live in uncertain times shaped by increasing complexities manifested as stress, trauma, global conflict, and overburdened institutions. We also live in exciting times as technological advances offer opportunities to improve the quality of life. In a post-modern world, what can we do to advance vertical development* of adults into higher states of consciousness?

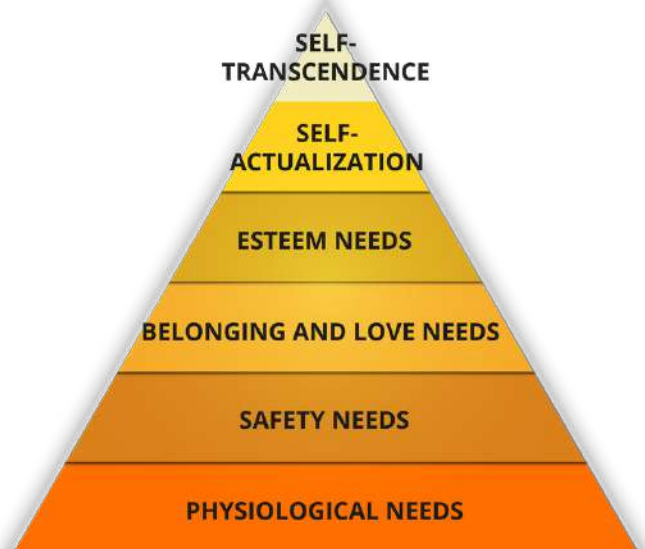
The New Human Research and Development Institute sponsors research investigating rapid stage vertical development by harnessing the body's inner organic technology to become higher-brain dominant, which can lead to shifting from a stress state to one of antifragility and thriving.

Our ability to use higher-level cognitive, heart, gut, and spiritual intelligence in an integral framework will equip humanity to advance. When leaders and practitioners evolve into higher states of being and functioning, they can access expanded abilities and capabilities to operate at the leading edge of innovation.

*Vertical development frames how adults continue to develop new contextual frameworks and world views. As adults evolve into these higher states, they develop new awarenesses and capabilities.

Maslow's Expanded Hierarchy of Needs

Abraham Maslow's theory adds "Self Transcendence" to the top of his model of psychological health. Subsequently, this model organized human needs into "Survival Needs" (the bottom four stages being lower-brain dominant) and "Growth Needs" (the top two stages being higher-brain dominant.) This model has been expanded to include a greater emphasis on the continued growth needs for adult human development.



WHAT WE ARE INVESTIGATING AND WHY IT MATTERS (CONT.)

TETRA Evolvment: Integral framework for humanity

The Integral framework articulated by contemporary American philosopher Ken Wilber provides a comprehensive overview of the systemic, cultural, psychological, behavioral and developmental dynamics that influence human growth and development. This multi-perspective view of reality is organized around a four-dimensional map simultaneously addressing: (1) Mind and Consciousness, (2) Body and Brain, (3) Relationships and Culture, and, (3) Environmental and Structural factors. This holistic approach provides a framework to assess, strategize, and design solutions to current challenges at any scale.

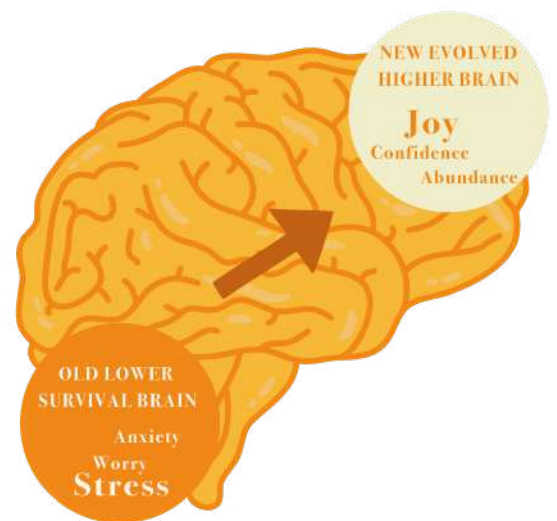
What is Tetra Evolvment?

Mind/Consciousness Interior Individual Subjective self-experiences	Body/Brain - Exterior - Individual - Objective Behaviors
Relationships/Culture - Interior - Collective - Subjective, shared experiences	Environment/Systems - Exterior - Collective - Inter-objectivity

WHAT WE ARE INVESTIGATING AND WHY IT MATTERS (CONT.)

Harnessing the inner organic technology of the body

While many people place hope for the future on external technology in fields of artificial intelligence and cyber enhancements, we suggest the need to include the role of the body's inner organic technology to help humans better adapt to external changes. We are not suggesting a mindset "shift." Rather we are investigating the physiological and subtle energies within the body that can result in transformation into a "new human." How do we harness these energies to improve higher brain functioning and improved integral outcomes?



Higher brain-first adult vertical development

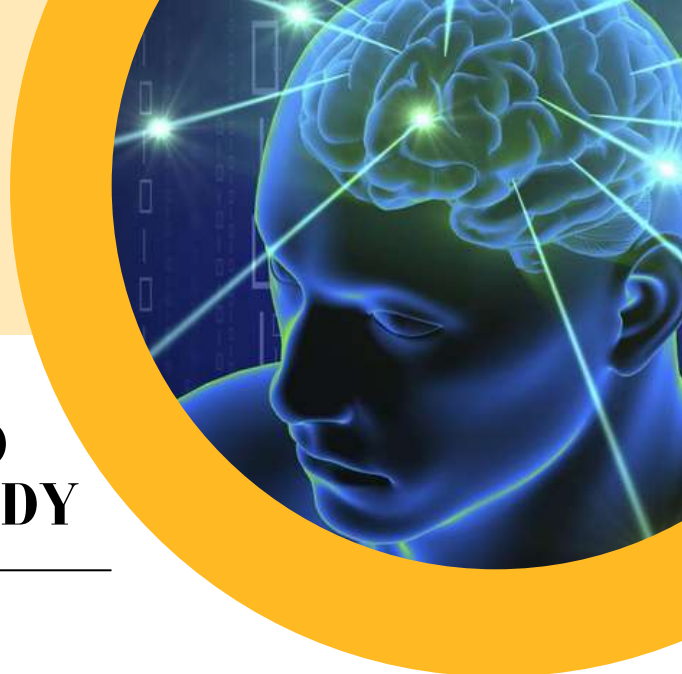
The research and investigative work being done by the New Human Research and Development Institute focuses on three phases of research:

1. Mapping and validating research being done to establish the connection between higher brain functions and its ability to catalyze advance stages of adult growth and development.
2. Establishing improved quality of life and health outcomes in adults who have made this shift in their vertical development.
3. Demonstrating improved organizational outcomes led by teams of higher brain dominant adults who see problems as opportunities and create higher order solutions.

In summary, we are exploring the link between changes in higher brain states to human thriving and our collective ability to shift cultural and institutional norms. Our research is investigating the impact of working in living dynamic systems designed to improve outcomes for humanity.

PENDING CASE STUDY

BRAIN-FIRST ACCELERATED DEVELOPMENT: A CASE STUDY



Abstract: The capacity of humans to create world peace is correlated with dominant states of experience, stages of development and brain physiology. Many professionals and leaders committed to waging peace make claims about how their technologies are designed to help humans reach the highest stages of development, but few put them to the test. The New Human Research and Develop Institute, in collaboration with New Human University, conducted a 12-month study involving 10 students. Students engaged in a daily practice of activating emergent "new huaman" physiology and functions to awaken and accelerate higher brain functions and shift developmental stages. Three methodologies were employed to measure outcomes: qEEGs, Sentence Stem Completion, and Self-Assessments. Results are presented to illustrate how higher brain activation correlates with students' states and development stages with suggestions for future research.

These findings will be presented in November 2022 via online seminars and a written report.

FOUNDING MEMBERS

Thirty-eight people or organizations have contributed time and money (over \$31,800) to support the formation of the New Human Research and Development Institute:

Adriana Brito, Alison Ooms,* Ana Cristina Mora, Aram Mesina, Bernau Family Foundation, Cyndi García, David Pérez, Dillon James, Donna Briggs, Erin Montealegre, Frank Boppel, George Larsen,* Haley Fox,* Julie-Ann Zilavy, Kent Johnson, Linda Pitsoulis, Margaret VanEpps, Marty Clemons,* Maurits van Sambeek,* Melissa Faith, Michael Cotton,* Michelle Hartman, Mónica Hernández, Nancy Montgomery, Mauro Zappaterra,* Paul Halvorson,* Phoebe Manalang,* Risa Rae, Ruth Bernau, Roman Angerer,* Sally Bishop, Sophia Thu Pham, Steven Giron, Sue Worden,* Tamika Guiton, Teree Harrison, Vicki Davis, and Wanda Solas.

**Current or former NHRDI Board member or staff*

LEADERSHIP TEAM



NHRDI BOARD MEMBERS



Phoebe Manalang
Chicago, IL
Board Chair, Executive Team
chair@newhumanresearch.org



George Larsen
Aliso Viejo, CA
Treasurer



Maurits Van Sambeek
Beek en Donk, Netherlands
Engagement and Benevolence
Committee Chair



Marty Clemons
Asheville, NC
Social Media and Marketing



Dr. Haley Fox
Forsyth, MO
Research & Development
Committee Chair



Sue Worden
Wilmington, NC
Secretary
Membership Committee

STAFF



Paul Halvorson
Minneapolis, MN
Executive Director
director@newhumanresearch.org



Felipe Díaz
Santiago, Chile
Project Assistant



BUILDING INFRASTRUCTURE

6-MONTH TIMELINE

July 1, 2022 - Dec 31, 2022

1. Complete a three-year Strategic Plan 2023 to 2025 by September 15
2. Host two-part webinar on case study findings by November 15
3. Identify benefactors to underwrite research projects for 2023 by December 1
4. Release updated member-oriented website by December 15
5. Publish NHRDI Annual Report and 2023 work plan by January 15

History (Key Milestones)

January 16, 2019	Date of Exemption (60-month preliminary ruling ends Jan 15, 2024)
June 27, 2020	Application for nonprofit 501(c)3 charitable status approved
May 5, 2021	First board meeting
February 15, 2022	Hired first Executive Director (part time) through June 1, 2022

PLEASE JOIN US

CALL TO ACTION

How you can become involved:

1. Join us as a volunteer or committee member
www.newhumanresearch.org
2. Share ideas and opportunities for future research and education projects
director@newhumanresearch.org
3. Request to become part of our mailing list
www.newhumanresearch.org/get-involved/
4. Make a tax-deductible contribution
www.newhumanresearch.org/get-involved/

Please support our work. Your contributions are welcomed.

CONTACT US



Dr. Paul Halvorson, Executive Director
director@newhumanresearch.org
612-296-7407 (Central Time Zone)
www.linkedin.com/in/paul-halvorson/



Phoebe Manalang, Board Chair
chair@newhumanresearch.org

