



*SEMI ANNUAL
PROGRESS REPORT*

NHRDI UPDATE

March 1, 2023



WELCOME

Dear members and friends,

I am excited to announce the formation of our new Advisory Council, which brings together a diverse and accomplished group of experts to provide guidance and strategic direction for the New Human Research and Development Institute. The Council will advise our leadership team on matters related to research, innovation, collaboration, and impact, and help us identify opportunities and partnerships to advance our mission. You can read their respective bios on our website.

The members of the Advisory Council represent a diversity of disciplines, and bring valuable insights, experiences, and perspectives to our work. We are grateful for their willingness to support our institute and look forward to their contributions.

Thank you for your continued support, and we look forward to periodically sharing our progress and achievements with you.

Phoebe Manalang
Board Chair
Chicago, IL



**BY BOARD CHAIR &
EXECUTIVE DIRECTOR**

Dear colleagues and friends,

Our new institute is being organized to sponsor research to better understand the mechanisms of late-stage adult development, as well as effective organizational development. We seek to investigate what makes for a highly evolved and functional human being, and how this can be measured and validated using scientific methods. In addition, we are investigating the mechanisms that make for effective organizations. Imagine a world of healthy and highly functional human beings (leaders) who are effective in working with others.

Our success will rely on our continued ability to work together and exchange ideas, challenge each other's assumptions, and experiment with new approaches and methods.

We thank the Bernau Family Foundation and our 38 founding members for their generous financial support over this past year.

Dr. Paul Halvorson
Founding Executive Director
Minneapolis, MN



ABOUT NHRDI

VISION

A critical mass of humans experience rapid vertical development and transcendence through whole brain actualization, marking a tipping point in the species.

MISSION

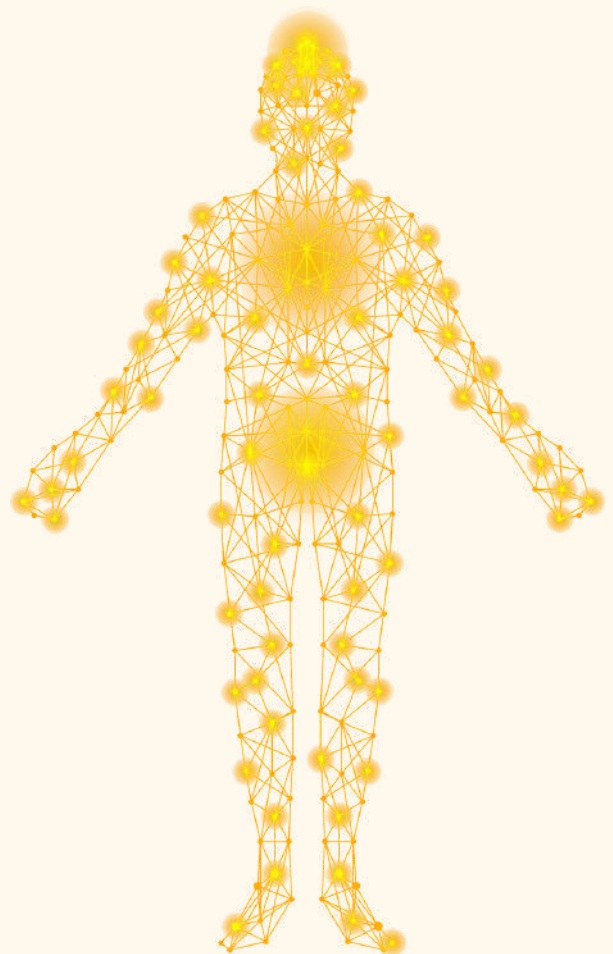
Catalyze cutting-edge research and education to advance higher human potential and evolution.

ORGANIZATIONAL PURPOSE

Sponsor scientific and applied research projects designed to explore the role of the body's organic technology to catalyze higher human potential and thriving.

Revised: November 2, 2022

VISION, MISSION,
ORGANIZATIONAL PURPOSE



USING TEXT ANALYSIS TO ASSESS STAGES OF ADULT DEVELOPMENT

Sentence Completion Tests (1) have been adapted (by Loevinger, Keegan, Cook-Greuter, O'Fallon, Angerer) to measure late-stage adult development of an individual's dimensions of thinking, doing, and being. These dimensions are critical components of human development with different theories describing different aspects of adult maturation. In this adaptation, sentence stems are designed to elicit responses that reflect an individual's level of development. The responses are then scored based on criteria that are specific to each stage of adult development.

This technique can be used in conjunction with other assessment tools and therapeutic interventions to help individuals achieve their full potential and overcome challenges related to ego development. However, it is important to note that this technique can only be used reliably by trained professionals, as the interpretation of the responses requires specialized knowledge and expertise. As a member of the NHRDI Advisory Council, Roman Angerer, along with his colleague, Risa Rae, are conducting leading edge

research with support from NHRDI. Below is a summary describing their theoretical model.

Development as Transcendental Pluralism (DTP) is a model of stage development aligned with one of the most complete models of consciousness development, specifically, the model posited by Indian mystical philosopher Sri Aurobindo in the early 20th century. Western models explored the idea of a genetic epistemology (as defined by James Mark Baldwin) that was further developed by Jean Piaget and Bärbel Inhelder, which is similar to Sri Aurobindo's model, i.e., that there are pre-established structures in humans which can become conscious. Immanuel Kant spoke of transcendentals, i.e., that which is not made up by ourselves but is the root and substance of any conscious experience.

(1) A method used in psychology and psychotherapy to assess an individual's personality, emotional state, and cognitive processes involving presenting the person with a series of sentence stems, which are incomplete phrases or sentences that require a response with the first thing that comes to mind. The responses are analyzed to gain insight into the person's thought patterns, attitudes, beliefs, and feelings.



WHAT DISTINGUISHES THE DTP MODEL

- The most complete picture of human development: 20 stages, eight of which unfold through adolescence and another 12 in early to late adulthood, make this model a valuable guide for every stage of life.
- A previously unsurpassed degree of detail in the sequence of stages: with four phases per stage, within stage transition, and detailed measures for transitions between stages.
- Convergent validity with each of Loevinger's and Cook-Greuter's ego development theories and Lawrence Kohlberg's stages of moral judgment: with the stages measurable by means of the Standard Issue Scoring Manual for Moral Judgment, a preliminary study showed almost perfect reliability and moderate agreement for measuring ego development up to the Construct-Aware stage.
- Above standard interrater reliability and agreement: Preliminary studies on interrater reliability and agreement show, with a Cronbach's alpha at 1, almost perfect interrater reliability within one quarter of a stage and almost perfect agreement at 95% and 100% within one stage.
- Textuality-based discernment between sixteen different personality types: Though other models like Lawrence Kohlberg (with his heteronomous versus autonomous moral judgment) or Mary Field Belenky (with connected versus separative knowing) have attempted to include typology in stage measurement, this model replicates the typological judgments of the Myers-Briggs Type indicator.
- Meticulously correlated with more than a dozen other models: The model allows reflection on development from multiple perspectives, not just from one model. This can serve to optimize stage development knowledge accumulated thus far.

This DTP model is being developed and refined based on ongoing research. Please use the hyperlinks listed above and below to access each referenced article, and click on the researcher's name below to contact them.



GROWING INTO YOUR SALUTOGENIC POTENTIAL

By Roman Angerer

"Aron Antonovsky (1980) in his book on *Health, Stress, and Coping* framed the idea of a Salutogenic model of health, where on a continuum between sickness and health an internal and external resourcefulness in relationship to stressors allows us to stay mentally and physically unharmed in the face of crisis".

Development as Transcendental Pluralism (DTP) is an assessment method employed to elucidate how Dr. Michael Cotton's "brain first" methods of activating advanced, emergent functions of the body and brain combined with transformational meditative practices and education of late stage adult development are providing flourishing results not previously seen.

The results of this study are based on a year-long training program. Visit the following link to read the full article: <https://medium.com/@romanangerer/the-new-human-university-growing-into-your-salutogenic-potential-a50acec2976>



Roman Angerer is an independent consultant and researcher with more than 10 years' experience. He is a PhD student in Integral Transpersonal Psychology at Ubiquity University and earned his master's degree in Theological Anthropology and Value Orientation in Business and Education. He also earned a certificate in Integral Transformative Leadership from Pacific Integral and Saybrook University.

Risa Rae is an assessor of the measures and metrics of Development as Transcendental Pluralism (DTP), a Mastery Level Higher Brain Living Facilitator, and a member of the New Human University faculty. She has 23 years' experience as a Certified Professional Bookkeeper, having earned her associates degree in Data Processing, specializing in Computer Applications, Business Systems, and Financial Accounting.



BOARD OF DIRECTORS



Phoebe Manalang
Chicago, IL
Board Chair



Marty Clemons
Asheville, NC
Social Media and Marketing



Sue Worden
Wilmington, NC
Secretary, Membership Committee



Dr. Haley Fox
Forsyth, MO
R&D Committee Chair



Maurits Van Sambeek
Beek en Donk, Netherlands
Benevolence Committee Chair

ADVISORY COUNCIL



Dr. Jerry R. Devore



Dr. Mauro Zappaterra



Dr. Steven Giron



Roman Angerer

STAFF



Dr. Paul Halvorson
Minneapolis, MN
Executive Director
director@newhumanresearch.org



Felipe Díaz
Santiago, Chile
Virtual Assistant
support@newhumanresearch.org



PLEASE JOIN US

How you can become involved:

1. Join us as a volunteer or committee member
www.newhumanresearch.org
2. Share ideas and opportunities for future research and education projects
director@newhumanresearch.org
3. Request to become part of our mailing list
www.newhumanresearch.org/get-involved/
4. Make a tax-deductible contribution
www.newhumanresearch.org/get-involved/

Please support our work. Your contributions are welcomed.

CONTACT US



Dr. Paul Halvorson, Executive Director
director@newhumanresearch.org
612-296-7407 (Central Time Zone)
www.linkedin.com/in/paul-halvorson/



Phoebe Manalang, Board Chair
chair@newhumanresearch.org